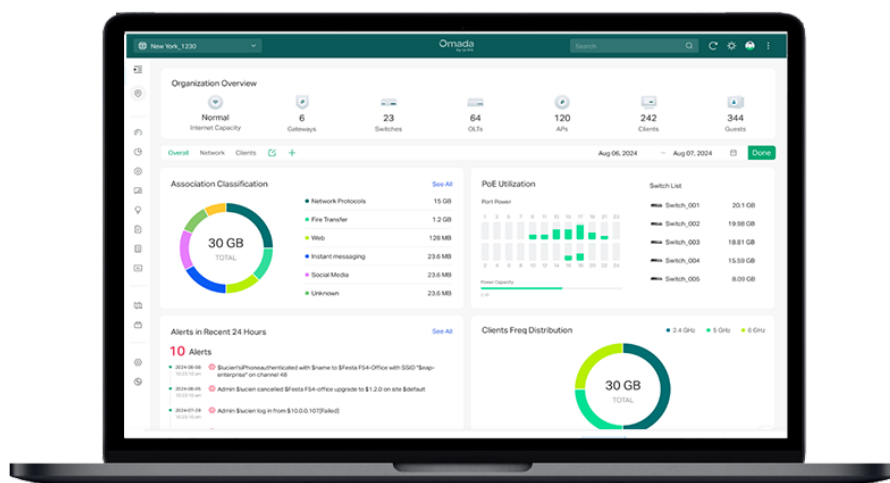


# Controller | Datasheet

## Omada Pro Software Controller



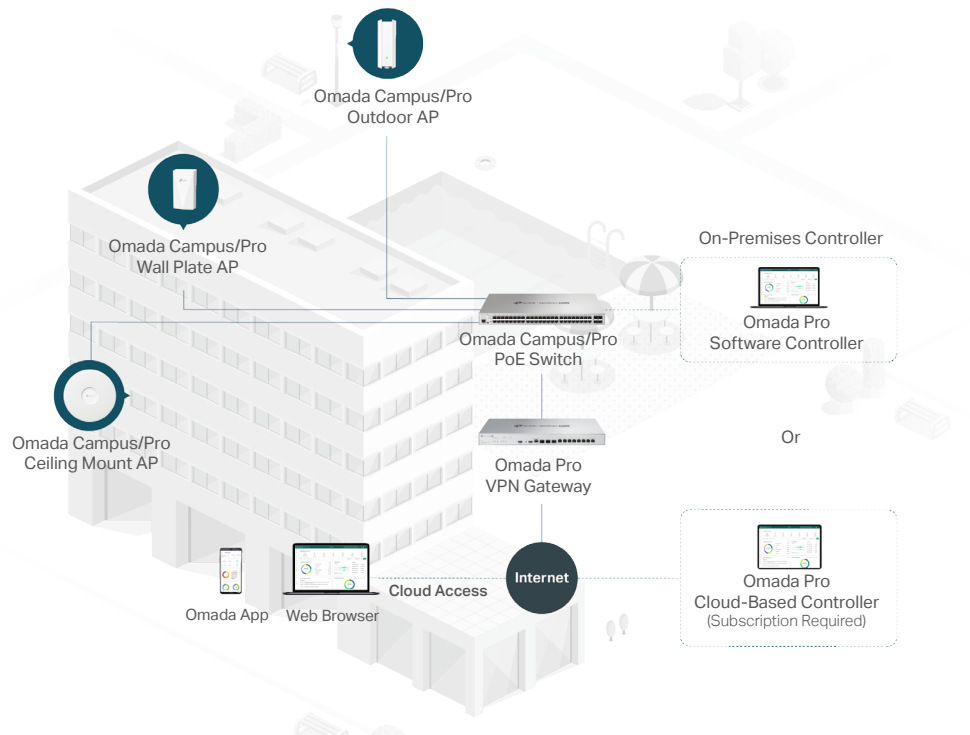
## Highlights

- **Unlimited Enterprise-Level Centralized Management Scale:** Centralized management for unlimited Omada Campus/Pro access points, switches, and gateways.\*
- **On-Premises Deployment:** Suitable for various scenarios with high-security requirements.
- **Cloud Access:** Manage and monitor with the Omada app or Web UI from anywhere, anytime.
- **Multi-Site and Multi-Customer Management:** Management, configuration, and monitoring provided by different sites.
- **Automated Radio Frequency Deployment:** Provides automated channel selection, power adjustment, bandwidth allocation, and frequency band deployment for high-density radio environments.
- **Intelligent Anomaly Detection and Analysis:** Supports real-time network health monitoring as well as abnormal event detection and analysis.
- **Omada App Support:** Use cloud access to manage with the Omada app from anywhere, anytime.

\*Actual management scale of the Omada Pro Software Controller depends on the PC/server's hardware specifications.

# Omada Pro Solution

Omada Pro is TP-Link's enterprise-grade product line designed to meet the high-capacity, security, and management needs of various industries. It provides one-stop professional cloud solutions, integrating a complete set of devices such as access points, switches, and gateways. It's ideal for diverse vertical industries including multi-dwelling units (MDUs), K-12 education, hospitality, public works, catering, manufacturing, malls, and more.



# Specifications

Model		Omada Pro Software Controller
System Management	Multi-Site Management	√
	Multi-tenant Management (Role/Site/Device Privileges)	√
	Cloud Access	√
	Migration (Site Migration/Controller Migration)	√
	Account Management	√
	Maximum Number of Sites	1000
	Maximum Number of Accounts	1000
	Maximum Number of Local Accounts	500
	Maximum Number of Cloud Accounts	500
	Maximum Number of Vouchers	50,000
	Maximum Number of Local Users	50,000
	Maximum Simultaneously Used VLANs	4,090 per site*
	Maximum Number of WLAN Groups	10000
	Maximum Number of SSIDs in WLAN Group	2.4GHz: 8 5GHz: 8 6GHz: 8
	Maximum Number of ACL	For each site: Gateway: 64 Switch: 32** EAP: 16
	Maximum Number of Free Authentication	32 in each site
	Maximum Number of Pre-Authentication Access	32 in each site
	Maximum Number of Authentication Free Policy	96 in each site
	Maximum Number of Reboot Schedule	8 in each site
	Maximum Number of PoE Schedule	8 in each site
	Maximum Number of MAC Filter Groups	8 in each site
	Maximum Number of MAC Addresses in Each MAC Filter Group	500 (4,000 in total per controller)
	Maximum Number of VPN	64 in each site
	Maximum Number of Static Routing	64 in each site
	Maximum Number of Policy Routing	64 in each site
	Backup & Restore	√
	Site Backup & Site Restore	√
	Auto Backup	√
	Customized UI Interface	√

\* The actual number of VLANs depends on the switch capacity and it may be less than 4090.

\*\* The actual number of ACL depends on the configuration and it may be less than 32.

Model		Omada Pro Software Controller
Network Management	Wired Network	✓
	Wireless Network	✓
	Network Security (ACL/URL Filtering/Attack Defense/Firewall/ IP-MAC Binding/Wireless IDS/IPS / IDS/IPS / Application Control)	✓
	Transmission (Routing/NAT/Session Limit/Bandwidth Control/ Gateway QoS/Switch QoS/VRRP)	✓
	Transmission - OUI Based VLAN	✓
	VPN (IPSec/L2TP/PPTP/OpenVPN)	✓
	Portal (Voucher/Local User/SMS/RADIUS/Form Auth/ External LDAP Server/External Portal Server)	✓
	802.1x	✓
	RADIUS (Authentication/MAC Auth/Accounting)	✓
	Profiles (Time Range/Groups/Rate Limit/PPSK/Gateway QoS Service/Bonjour Service/RADIUS Profile/ LDAP Profile/APN Profile)	✓
	Profiles - OUI Profile	✓
Device Management	Management Device Type	Basic Site: Omada EAP*, Omada Switch, Omada Gateway/Router Pro Site: Omada Pro AP, Omada Pro Switch, Omada Pro Gateway/Router
	Management Scale	≤ 10,000 Devices**
	Device Automatic Discovery	✓
	Batch configuration	✓
	Online upgrade	✓
	Reboot Schedule	✓
	PoE Schedule	✓
	WLAN Scheduler	✓
	DDNS	✓
	SNMP	✓
	SSH	✓
	Stacking	✓
	M-LAG	✓
	VRF	✓
	CLI Configuration (Site CLI / Device CLI)	✓
	Tools (Network Check / Packet Capture / Terminal)	✓
	License Licenses/License Info/License Usage History	✓
	Firmware (Overview/One-Time Upgrade/Periodic Upgrade/Upload Firmware for Upgrade)	✓

\* Currently, Omada GPON APs and Bridge APs are not supported.

\*\*Actual management scale of the Omada Pro Software Controller depends on the PC/server's hardware specifications.

Omada Pro Software Controller can manage up to 10,000 APs if the Controller Host has enough hardware resources. To guarantee operational stability for managing 10,000 APs, we recommend that you use the hardware which meets or exceeds the following specifications:

-CPU: 64 vCPU, 2.0 GHz

-Memory: 64 GB RAM or more

Model		Omada Pro Software Controller
Monitoring	Dashboard (Custom Dashboard)	✓
	Statistics (Performance/Switch Stats/Speed Test Stats)	✓
	Network topology	✓
	Network Map	✓
	Devices List (Custom Table)	✓
	Clients List (Custom Table)	✓
	Insights (Known Clients/Past Connections/Past Portal Authorizations/Rogue APs)	✓
	Logs (Alerts/Events/Custom Notifications)	✓
	Audit Logs (Events/Webhook)	✓
	Health (Overview/Device Health/WAN Health/Wi-Fi Health/Client Health)	✓
	Abnormal (Overview/Incident/Notification/Settings)	✓
	Reports (Summary/Wireless Summary/Wired Summary/Wireless Devices/Wired Devices/SSID/Clients)	✓